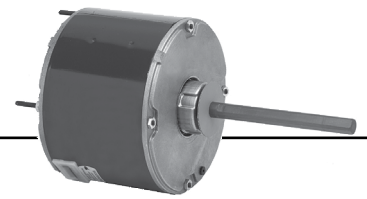


Permanent Split Capacitor Condenser Fan 5.6" Diameter, Totally Enclosed, Air Over (TEAO)

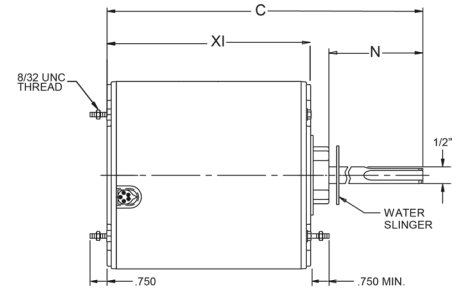


APPLICATIONS:

Residential and commercial condenser unit fan motors to meet manufacturer's requirements.

FEATURES:

- 140°F (60°C) Ambient Design
- Sleeve Bearings Have All Angle Thrust System
- Class B Insulation
- Suitable for Use With 370V Capacitors
- Extended Studs
- 30" Leads
- Hubless Lead End
- Drain Holes Both Ends
- Reversible Rotation
- Automatic Reset Thermal Overload Protector
- Continuous Duty
- **Discount Symbol: DS-3HAC**



Stud Mount, Without Capacitor, 60°C, All Angle Mount

HP	RPM	Voltage	Catalog Number	Bearings	Cap. MFD	Amps	Shaft N	Shell XI	Total C	Rotation	Ship Wt.	Notes	OEM
1/12	1100	208-230	3401	SAB	5.0	0.7	1.6	4.1	5.7	CWLE	9	H20	CA
1/10	825	208-230	1871	SAB	3.0	1.0	6.0	3.8	10.4	-	11		
	1100	208-230	3402	SAB	5.0	0.8	1.6	4.1	5.7	-	9		CA
1/8	825	208-230	1872	SAB	5.0	0.8	6.0	4.1	10.6	-	12	72	
	825	200-230	1902	Ball	5	.74	1.9	4.4	6.2	CCWLE	10.7		TR
	825	208-230	5456	SAB	5.0	1.2	3.8	4.1	7.8	-	10	72	RH
1/6	825	208-230	1873	SAB	5.0	1.0	6.0	4.1	10.6	-	12	72	
	825	208-230	5457	SAB	7.5	1.2	3.8	4.6	8.3	-	12	72	RH
	825/2	208-230	8673	SAB	5.0	1.0	6.0	4.4	10.9	-	17		
	1075	208-230	1859	SAB	5.0	1.0	5.0	3.8	9.4	-	9		
	1500	208-230	3405	Ball	5.0	0.8	1.6	4.3	6.2	-	7	H20	CA
1/5	825	200-230	1903	Ball	7.5	.93	2.3	5.1	7.3	CCWLE	15.0		TR
	1075	208-230	5450	SAB	3.0	1.3	3.7	3.8	7.5	-	10	72, H16	RH
	1075	208-230	5454	SAB	3.0	1.7	3.7	3.8	8.1	-	10	72	RH
1/4-1/8	825	208-230	1874	SAB	5.0	2.0	6.0	4.3	10.9	-	11	72	
1/4	825	460	1880	Ball	5.0	1.0	6.0	5.1	11.6	-	3		
	825	575	1276	Ball	5	0.7	5.0	4.5	9.9	Rev.	10		
	850	208-230	1743	SAB	5.0	1.5	2.8	4.6	7.3	-	17	H20	YK
	825/2	208-230	8674	SAB	7.5	1.5	6.0	4.6	11.1	-	15		
	1075	208-230	1860	SAB	5.0	1.5	5.0	4.1	9.6	-	10		
	1075	208-230	1876	Ball	5.0	1.5	5.0	4.1	9.6	-	11		
	1075	460	3736	Ball	7.5	0.8	6.0	4.6	11.1	-	12		
	1100	208-230	3404	SAB	5.0	1.8	1.6	4.6	6.2	-	11	H20	CA
1625	208-230	1890	SAB	5.0	1.4	5.0	4.3	9.9	-	12			

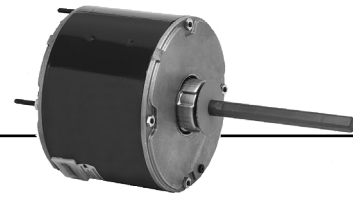
CA = Carrier RH = Rheem YK = York TR = Trane

Note 72: Includes 4 Holes in Shell for Rheem Mount

Note H16: CCWLE rotation only

Note H20: CWLE rotation only

Permanent Split Capacitor Condenser Fan 5.6" Diameter, Totally Enclosed, Air Over (TEAO)



(continued)

HP	RPM	Voltage	Catalog Number	Bearings	Cap. MFD	Amps	Shaft N	Shell XI	Total C	Ship Wt.	Notes	OEM
1/3-1/5	825	208-230	1875	SAB	7.5*	2.4-1.4	6.0	5.1	11.6	15	72	
1/3	825/2	208-230	8675	SAB	7.5	2.0	6.0	5.4	11.9	18		
	825	460	1881	Ball	7.5	1.0	6.0	5.6	12.1	17		
	825	575	1296	Ball	7.5	1.1	5.0	5.3	10.9	17		
	1075	208-230	1861	SAB	7.5	2.0	5.0	4.6	10.1	14		
	1075	208-230	5455	SAB	5.0	2.0	3.7	4.1	8.3	12	72	RH
	1075	208-230	1877	Ball	7.5	2.0	5.0	4.6	10.1	14		
	1075	460	3737	Ball	7.5	1.3	6.0	5.4	11.9	17		
	1075/2	208-230	8670	SAB	7.5	2.2	6.0	4.8	11.4	16	71	
1/3-1/6	1625	208-230	1891	Ball	7.5	1.6	5.0	4.6	10.1	11		
	825/2	208-230	5464	Ball	10 / 7.5	1.9 / 1.2	5.0	5.3	10.3	18	72	
	825/2	208-230	5464H	Ball	7.5	1.9 / 1.2	5.0	5.3	10.3	18		
	1075	208-230	3322	SAB	10.0	1.8	5.0	4.6	9.6	11	72	
	1075	208-230	3323	Ball	7.5	2.0	5.0	4.1	9.1	13	72	
	1075/2	208-230	5462	Ball	7.5 / 5.0	2.6 / 1.8	5.0	4.6	9.6	15	72	
1/3	1075/2	208-230	5462H	Ball	5.0	2.6 / 1.8	5.0	4.6	9.6	18		
	1075	460/380-420	LX7922	Ball	10.0	1.3	3.9	5.3	9.3	15		
1/2	825	208-230	1870	SAB	12.5	2.8	6.0	6.4	12.4	22		
	825	460	1882	Ball	10.0	1.6	6.0	6.3	12.9	21		
	1075	208-230	1862	SAB	10.0	3.1	6.0	5.3	11.9	16		
	1075	208-230	1878	Ball	10.0	3.1	6.0	5.3	11.9	11		
	1075	460	3738	Ball	10.0	1.5	6.0	5.9	12.4	19		
	1075	575	1098	SAB	10.0	1.0	5.0	6.4	11.4	20		
	1075/2	208-230	8671	SAB	10.0	2.9	6.0	4.3	10.8	10	71	
	1625	208-230	1892	SAB	5.0	3.0	5.0	5.1	10.6	23		
1/2-1/6	1625/1	575	1198	Ball	7.5	1.0	6.5	5.3	11.9	16.7		
	1075/2	460	5480H	Ball	10.0	1.3	5.0	5.6	11.1	19		
1/2-1/5	1075/2	208-230	5465	Ball	12.5 / 10.0	3.0 / 1.3	5.0	5.3	10.3	15	72	
	1075/2	208-230	5465H	Ball	10.0	3.0 / 1.3	5.0	5.6	10.3	14		
3/4	1075	208-230	1868	SAB	10.0	4.7	5.0	5.8	10.3	20		
	1075	208-230	1879	Ball	10.0	4.7	5.0	5.8	11.4	21		
	1075	460	3742	Ball	10.0	2.0	6.0	6.4	12.9	21		
	1060	575	1099	SAB	12.5	1.25	5.0	6.4	11.4	18		
3/4-1/4	1075/2	208-230	5482H	Ball	15.0	1.0	5.5	6.3	11.9	14		
	1075/2	460	5481H	Ball	15.0	2.2	5.5	6.3	11.9	22		
1	1075	460	1409	Ball	25.0	2.5	6.0	6.8	13.4	25		

RH = Rheem

Note 71: 1.5" Stud Ext., Shaft End only, 104°F (40°C) Ambient, Double Flats

Note 72: Includes 4 Holes in Shell for Rheem Mount

*Uses 440V capacitor.

